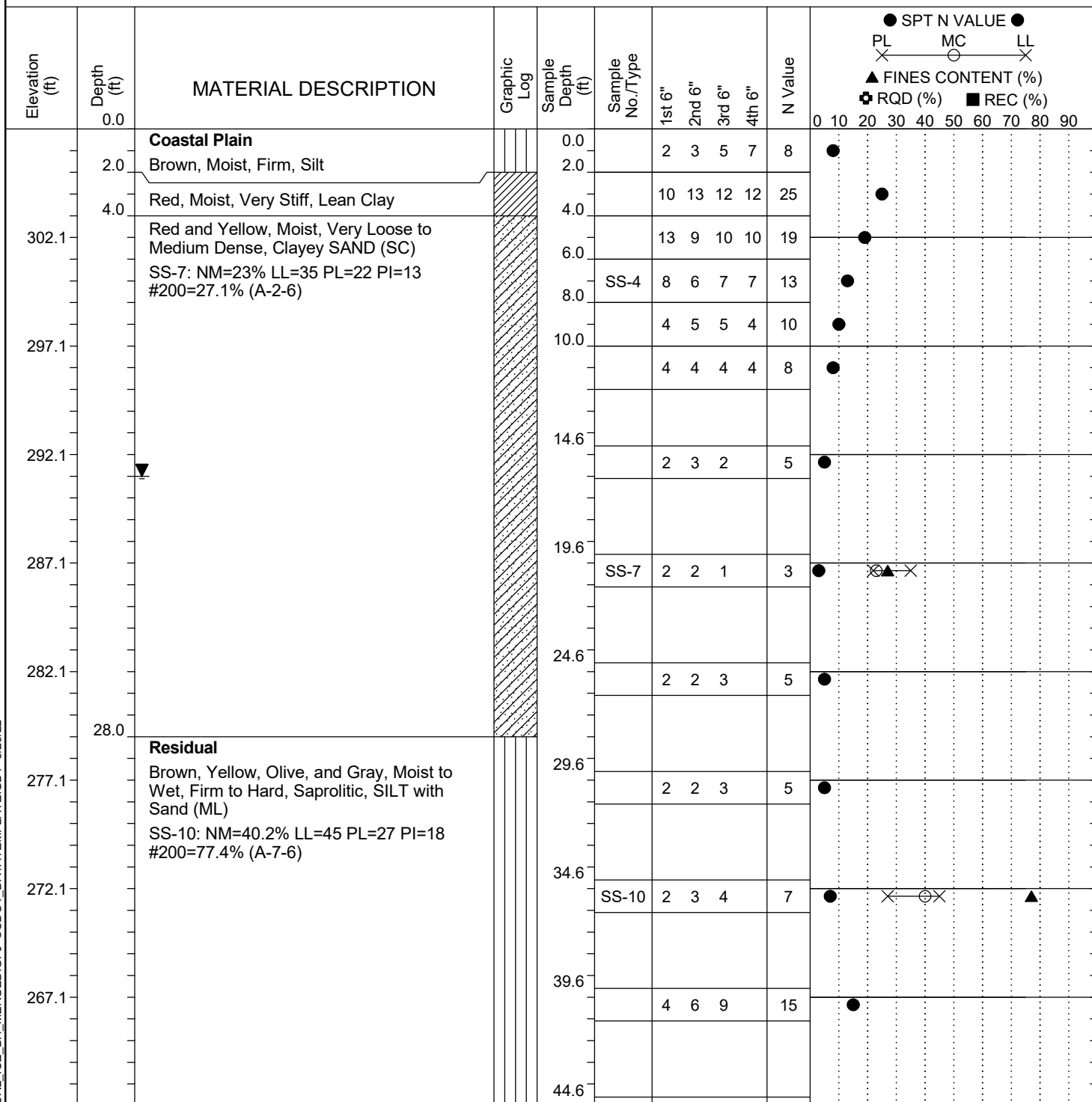


Project ID:	P039719	County:	Richland	Boring No.:	G-125
Site Description:	Carolina Crossroads Phase 2			Route:	Broad River Rd.
Eng./Geo.:	O. Daynes	Boring Location:	615+26	Offset:	58 RT
Elev.:	307.1 ft	Latitude:	34.0391808	Longitude:	-81.09358666
Total Depth:	74.9 ft	Soil Depth:	74.9 ft	Date Started:	3/1/2022
Core Depth:	N/A ft	Date Completed:	3/1/2022		
Bore Hole Diameter (in):	2.25	Sampler Configuration		Liner Required:	Y (N)
Drill Machine:	CME-45B #31	Drill Method:	RW	Hammer Type:	Automatic
Core Size:	N/A	Driller:	A. Fowler	Energy Ratio:	86%
		Groundwater:	TOB	10.6 ft	24HR 16 ft


LEGEND

Continued Next Page

SC.DOT 20-81_CCR2_ICE_BH_MERGED.GPJ SCDOT_DATATEMPLATE.GDT 8/23/22

SAMPLER TYPE		DRILLING METHOD	
SS - Split Spoon	NQ - Rock Core, 1-7/8"	HSA - Hollow Stem Auger	RW - Rotary Wash
UD - Undisturbed Sample	CU - Cuttings	CFA - Continuous Flight Augers	RC - Rock Core
AWG - Rock Core, 1-1/8"	CT - Continuous Tube	DC - Driving Casing	